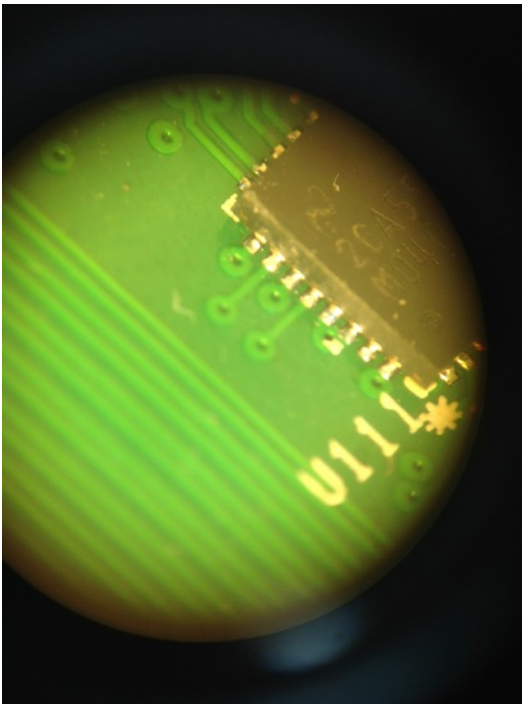
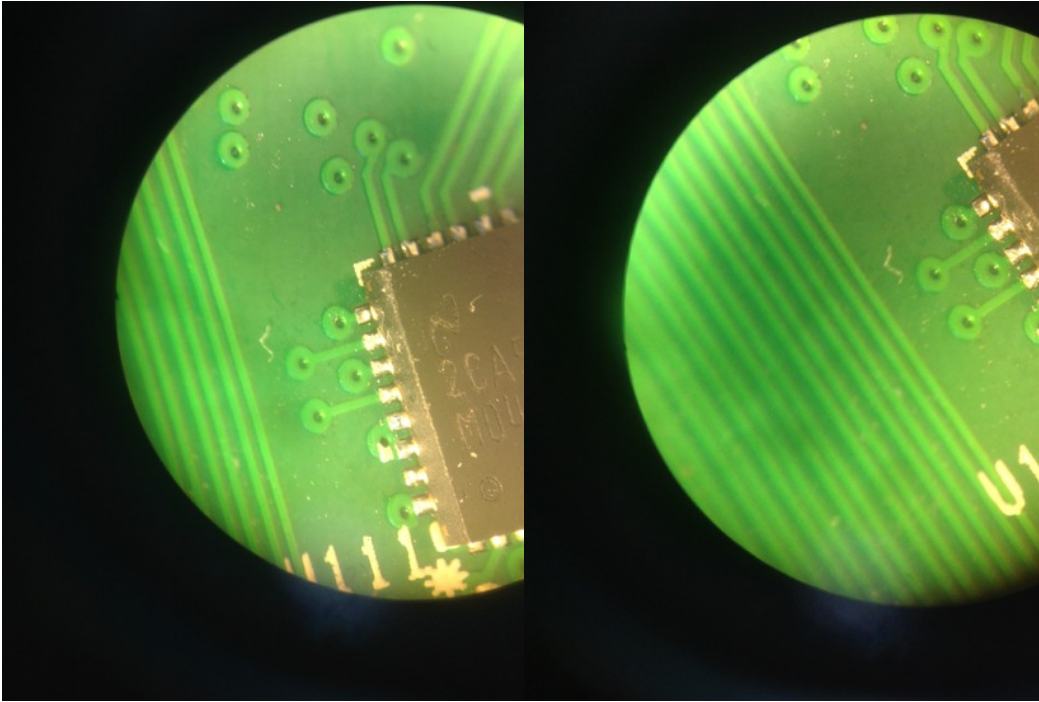


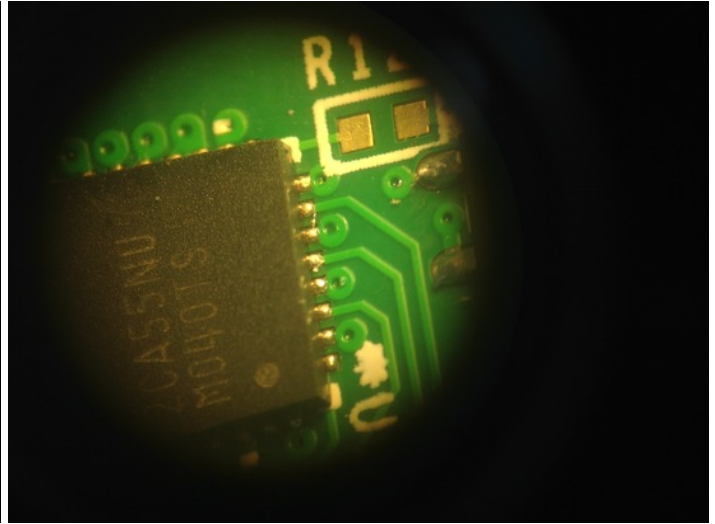
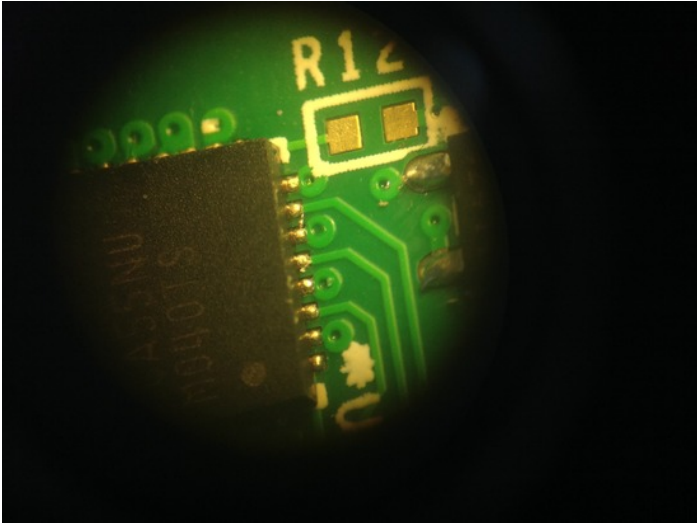
ITEM	STATUS	COMMENT
Components	Standard	All components according to assembly plan
EEPROM (U2)	NOT PRESENT	
R916	NOT PRESENT	no PEX configuration by I2C
Firmware	Programmed	"generic7-D1111-A1110-L1101-C1100.mcs"
FW switch (SW5)	(1101) RTM_TCLKA PCIe source	for use with LEGACY boards and x16 RTM
J36/J37	ON	
IPMC	NOT PRESENT	
Mechanics	Not Assembled	LED kits assembled
PCIe test	OK	with ATCA-PTSW-AMC4 RTM v2.1 #2 , cable, OSSx4
LEDs	OK	
Current location	IST, Lisbon.	

Issues found:

1. Faulty soldering of U111 caused the CLK3A and CLK3B and respective control signals to malfunction and fail the tests with IPFN legacy boards. U111 also shows some unusual surface wear.



2. Faulty soldering on U100 was detected, as shown on pictures



3. Faulty soldering on J2 (pictures missing)